



SWAMPY HOLLOW

MANUFACTURING

A LEADER IN TRUCK BODY FABRICATION

- Heavy Duty Stake
- All-Purpose Pickup
- Landscape & Trash
- Mason Dump Bodies



NTEA
THE ASSOCIATION FOR THE WORK TRUCK INDUSTRY
MEMBER

2015

PB9600 Heavy Duty Platform / Stake Bodies

For the Heaviest Hauling Jobs



Shown Equipped with
12' Body with Optional Wood Floor

- Stake Racks
- 3/4" Pintle Hitch Plate
- ICC Bar
- 2-5/16" Combo Pintle Hitch
- Trailer Connector
- Backup Alarm

Full Installation Available on all Products We Sell

Install Options:

- Rear Hitch Plate or Hitch Receiver
- Underbody Toolboxes
- Dump Hoist - Electric or PTO
- Backup Alarm
- Brake Controller
- Trailer Connector
- Load Tarps - Manuel or 12V
- ICC Bars
- Liftgates

Standard Specifications and Options



- 48" high weld-on bulkhead with mesh window. Also available in 42", 54", or 60" high
- 3/4" LED Marker and clearance light kit meets (FMVSS108) Includes wiring harness
- Primered and painted black, (other colors available)
- Structural channel long sills
 - 8'6" - 14'6" 6" x 8.2 lb. channel
 - 16'6" - 20'6" 7" x 9.8 lb. channel
 - 22'6" - 26'6" 8" x 11.5 lb channel
- 3" Structural channel crossmembers 12" o.c.
- 4" Structural channel rear rail
- 10 ga. smooth steel floor with formed side rails
- 3/16" heavy duty exterior stake pockets with 3/8" x 2" rub rail on sides and rear
- Standard overall width 96" (optional 102" wide)

Standard Overall Length and Approximate Weight in Pounds*

Length	8'6"	9'6"	10'6"	12'6"	14'6"	16'6"	18'6"	20'6"	22'6"	24'6"	26'6"
Weight	1161	1266	1370	1575	1782	2039	2252	2464	2751	2972	3192
Wood Floor Weight	1116	1212	1307	1496	1687	1927	2124	2319	2590	2794	2998

*Length includes 3" bulkhead and rear stake pockets with rubrail

Options:

- Floor: T&G treated pine, apitong hardwood, treadplate, or anti slip floor paint
- Full rear 10" drop light apron Includes oval stop/tail,turn, reverse, and license plate lights with wiring harness
- Cab shield (various sizes available)
- ICC bumpers
- Custom sizes and configurations available

Stake Racks

- Available in 3 slats up to 36" high, 4 slats up to 48" high
- Constructed with 11 ga. reinforced hat stakes and 16 ga. roll formed slats
- Spring loaded latch system on stakes assure secure attachment to body
- Optional rear swingout racks with weld-on or bolt-on rear post
- Optional convert to a landscape body using solid lift-out racks or use mesh or plywood on our slatted racks
- Rack weight per 4' section
 - 4 slat 48" high (55 lbs.)
 - 3 slat 36" high (43 lbs.)



PB9600 Super Duty Platform / Stake Bodies

For the Heaviest Hauling Jobs



Shown Equipped with

- 24' Body
- ICC Bar
- Backup Alarm
- Twin Telescopic Underbody Hoist

Full Installation Available on all Products We Sell

Install Options:

- Rear Hitch Plate or Hitch Receiver
- Underbody Toolboxes
- Dump Hoist - Electric or PTO
- Backup Alarm
- Brake Controller
- Trailer Connector
- Load Tarps - Manual or 12V
- ICC Bars
- Liftgates

Standard Specifications and Options



- 48" high weld-on bulkhead with mesh window. Also available in 54", and 60" high
- Marker and clearance light kit meets (FMVSS108) Includes wiring harness
- Primered and painted black (other colors available)

- Structural channel long sills
12'6" - 18'6" 7" x 9.8 lb. channel
20'6" - 26'6" 8" x 11.5 lb. channel
- 4" Structural channel crossmembers 12" o.c.
- 6" Structural channel rear and side rails
- 7 ga. smooth steel floor
- 3/16" heavy duty exterior stake pockets with 3/8" x 3" rub rail on sides and rear
- Standard overall width 96" (optional 102" wide)

Standard Overall Length and Approximate Weight in Pounds*

Length	12'6"	14'6"	16'6"	18'6"	20'6"	22'6"	24'6"	26'6"
Weight with steel floor	2262	2556	2844	3134	3510	3797	4095	4395
Weight with wood floor	1971	2210	2447	2684	2994	3241	3484	3733

*Length includes 3" bulkhead and rear stake pockets with rubrail

Options:

- Floor: T&G treated pine, apitong hardwood, treadplate, or anti slip floor paint
- Full rear 10" drop light apron Includes oval stop/tail, turn, reverse, and license plate lights with wiring harness
- Cab shield (various sizes available)
- ICC bumpers
- Custom sizes and configurations available

Stake Racks

- Available in 3 slats up to 36" high, 4 slats up to 48" high
- Constructed with 11 ga. reinforced hat stakes and 16 ga. roll formed slats
- Spring loaded latch system on stakes assure secure attachment to body
- Optional rear swingout racks with weld-on or bolt-on rear post
- Optional convert to a landscape body using solid lift-out racks or use mesh or plywood on our slatted racks
- Rack weight per 4' section
- 4 slat 48" high (55 lbs.) - 3 slat 36" high (43 lbs.)



PB8000 All-Purpose Platform Pickup Bodies



*Replacement Beds
for the Medium
to Heavy Duty
Pickup Trucks*

Shown Equipped with 8'6" Body

- Single Wheel Width
- 2" Rear Hitch Receiver
- Trailer Connector

Full Installation Available on all Products We Sell

Install Options:

- Rear Hitch Receiver
- Goose Neck Hitch with
2-5/16" Ball and
Flush Mount Access Door
- Under Body Toolboxes
- Dump Hoist - Electric
- Brake Controller
- Trailer Connector
- Backup Alarm

Standard Specifications and Options

Shown is the 96" bed width for dual wheel trucks



- 4" structural channel long sills
- 3" formed channel 12 ga. crossmembers 12 o.c.
- 12 ga. smooth steel floor with formed side rails
- 1/8" exterior stake pockets with 1/4" x 2" rub rail on sides and rear
- 40" high tapered weld-on bulkhead, top half mesh, bottom half solid
- 6" oval tail and reverse lights, 3 cluster rear and side marker lights and license plate light kit meets (FMVSS108) Includes wiring harness

- Primed and painted black (other colors available)
- Standard Overall Width
 - 82" for single wheel trucks
 - 96" for dual wheel trucks

Standard Length and Approximate Weight in Pounds*

Width	7'6" long	8'6" long	9'6" long	10'6" long	11'6" long	12'6" long
82"	617	675	736	N/A	N/A	N/A
96"	N/A	760	828	896	964	1031

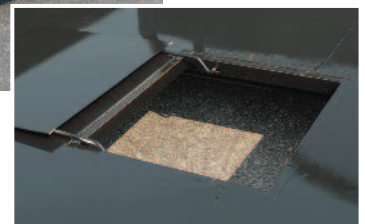
*Length includes 3" bulkhead and rear stake pockets with rubrail

Options:

- Floor options, T&G treated pine, apitong hardwood, treadplate or anti slip floor paint
- 10" or 14" high fold down sides with double hinged tailgate
- Stake racks sides with square bulkhead
- Gooseneck hitch incorporated on body
- Flush mount access panel for gooseneck hitch
- Custom sizes and configurations available



Above: 10" Fold down sides



Right: Gooseneck access

PUB9000 Platform / Utility Body

The Multi Purpose Utility Body is the right choice for a wide range of jobs: Contractors, Plumbers, Concrete & Block, Hardscaping, Electricians, and Roofers



Shown Equipped with 9'6" Body

- Ladder Rack
- Extended 2" Rear Hitch Receiver

- Trailer Connector
- Tire Holder
- Underbody Toolbox

Full Installation Available on all Products We Sell

Install Options:

- Rear Hitch Receiver
- Goose Neck Hitch with
2-5/16" Ball and
Flush Mount Access Door
- Under Body Toolboxes
- Brake Controller

- Trailer Connector
- Backup Alarm

Standard Specifications and Options



- Primed and painted black (other colors available)
- Standard Overall Width
 - 82" for single wheel trucks
 - 96" for dual wheel trucks

Standard Length and Approximate Weight in Pounds*

Width	9'6" long	11'6" long
82"	1,010 lbs.	1,036 lbs.
Total weight w/rack	1,248 lbs.	1,274 lbs.
96"	1,112 lbs.	1,138 lbs.
Total weight w/rack	1,351 lbs.	1,415 lbs.

*Length includes 3" bulkhead and rear drop down tailgate

- 4" structural channel long sills
- 3" formed channel 12 ga. crossmembers 12 o.c.
- 1/8" dia. plate steel floor with formed side rails
- 10" light apron
- 40" high tapered weld-on bulkhead, top half mesh, bottom half solid
- 6" oval tail and reverse lights, 3 cluster rear and side marker lights and license plate light kit meets (FMVSS108) Includes wiring harness
- 3 - 6" oval lights on top of bulkhead 2 - S/T/T lights, 1 - cargo light
- Top mount toolboxes, 18" high x 16" deep x 90" lg, for 9'6" body, 114" long for 11'6" bodies w/2 doors per side, spring tension T-handle lockable latches
- Six broom handle holders - 3 per side, (see picture below)

Options:

- Ladder Rack 63-3/4" wide w/48" front of bulkhead w/removable cross bars above load space
- Gooseneck style hatch door with gooseneck hitch incorporated in body
- Custom sizes and configurations available
- Spare tire holder



Right: Ladder Rack
Left: Broom Holder



Heavy Duty Mason Dump Bodies

2 - 6 Yard Dump Bodies



Shown equipped with
10' Mason Dump Body with 18" sides

- Standard Cab Shield
- Tailgate Metering Shute
- Electric Hoist
- 3/4" Pintle Hitch Plate
- ICC Bar
- 2-5/16" Combo Pintle Hitch
- Backup Alarm
- Brake Controller
- Trailer Connector

Full Installation Available on all Products We Sell

Install Options:

- Dump Hoist - Electric or PTO
- Rear Hitch Plate or Hitch Receiver
- Underbody Toolboxes
- Backup alarms
- ICC Bar
- Brake Controllers
- Trailer Connectors
- Load Tarps - Manual or 12V

Standard Specifications and Options



- 6" x 8.2 lb. structural channel long sills
- 3" structural channel cross members 12 o.c.
- 10 ga. steel floor formed with inner side wall
- 12 ga. outer wall sides with box formed top and V-formed outside wall with 2 vertical braces
- 18" cab shield, with mesh window and brackets for side boards (various heights available)
- Rear posts 6" higher than sides with brackets for side boards
- Dump body light kit includes marker & clearance lights and 1 stop/turn/tail-light per rear corner post with wiring harness. Meets (FMVSS108)
- Available with 12", 18", or 24" sides
- Standard width 96" outside
- Inside width 86-3/4"
- Primered and painted black (other colors available)

Tailgate Standard Features:

- Constructed with 10 ga. Steel
- Fully boxed frame with 2 - 12ga. vertical posts
- Standard height - 6" higher than sides
- Fully double acting with bottom release lever at driver's side, Upper release is quick release screw pin style
- Standard with spreader chains and banjo eye chain holders on rear post

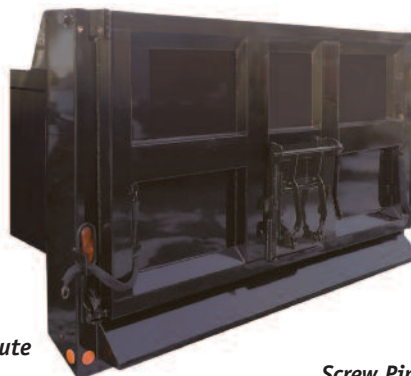
Standard Length and Approximate Body Weight/Cubic Yards capacity*

Length	8'6"	9'6"	10'	11"	12'
12" Sides	1669/2.27	1788/2.55	1834/2.67	1951/2.94	2069/3.21
18" Sides	1821/3.41	1951/3.83	2001/4.01	2129/4.41	2257/4.82
24" Sides	n/a	n/a	2169/5.35	2306/5.89	2445/6.42

*Tailgate adds 3" to overall length

Options:

- 8" x 17" tailgate metering shute
- 24" or 30" cab shield
- Custom sizes
- Dump Hoists - Electric or PTO
- Load tarps - manual or 12V



Metering Shute



Screw Pin Top Release

Super Duty Dump Bodies

5 - 9 Yard Dump Bodies



Shown equipped with
12' Super Duty Dump Body - 36" sides

- Standard Cab Shield
- Tailgate Metering Shute
- Hydraulic Front Mount Telescopic Hoist
- 3/4" Pintle Hitch Plate
- ICC Bar
- Truck Step - 2 Rung Retractable Bolt-on
- Underbody Toolbox - Steel 18x18x36
- 2-5/16" Combo Pintle Hitch
- Backup Alarm
- Brake Controller
- Trailer Connector
- Pull Style Spring Return Tarp Kit

Full Installation Available on all Products We Sell

Install Options:

- Dump Hoist - Electric or PTO
- Rear Hitch Plate or Hitch Receiver
- Underbody Toolboxes
- Backup alarms
- ICC Bar
- Brake Controllers
- Trailer Connectors
- Load Tarps - Manual or 12V

Standard Specifications and Options



Tailgate Standard Features:

- Constructed with 7 ga. Steel
- Fully boxed frame with 2 - 10ga. horizontal and 2 - 10ga. vertical braces
- Standard height 10" higher than sides
- Top pivot is bolt-in pin style
- Bottom has dump latch with release lever at driver's side
- Standard with spreader chains and banjo eye chain holders on rear posts

- 7" x 9.8 lb. structural channel long sills
- 4" structural channel cross members 12 o.c.
- 7 ga. steel floor
- 7 ga. side walls with boxed tubing top rail and 10 ga. vertical braces
- 18" cab shield, with mesh window and brackets for side boards (various heights available)
- Rear posts 10" higher than sides with brackets for side boards
- Dump body light kit includes marker & clearance lights and 1 stop/turn/tail-light per rear corner post with wiring harness. Meets (FMVSS108)
- Available with 24", 30", or 36" sides
- Standard width 96" outside
- Inside width 86-1/2"
- Primered and painted black (other colors available)

Standard Length and Approximate Body Weight/Cubic Yards capacity*

Length	10'	11'	12'
24" Sides	2784/5.33	2957/5.87	3145/6.40
30" Sides	2955/6.67	3135/7.34	3336/8.00
36" Sides	3126/8.00	3313/8.81	3527/9.61

*Tailgate adds 3" to overall length

Options:

- 12-3/8" x 13-1/2" tailgate metering shute
- 24" or 30" cab shield
- Custom sizes
- Dump Hoists - Electric or PTO
- Load tarps - manuel or 12V



Metering Shute

LBO-2000 Landscape Bodies

The Landscaper's rugged beaver tail and folddown ramp let you drive equipment on and off your landscape truck



Shown Equipped with
20' Landscaper body with 4' beaver tail

- Folddown Sides
- 4' Beaver Tail
- 2" Hitch Receiver
- Trailer Connector
- Backup Alarm

Full Installation Available on all Products We Sell

Install Options:

- Underbody Toolboxes
- Backup Alarm
- Brake Controller
- Trailer Connector

Standard Specifications and Options



- 4" Structural channel long sills
- 3" Formed channel cross members - 12" centers
- 1/8" Diamond plate floor, including beaver tail

- 60" High 1-1/2" steel tubing and mesh bulkhead with 18" side returns and built-in 24" high storage box with lockable drop down door
- Perimeter wall - 1-1/2" steel tubing
- 18" High expanded metal permanent-mount sides
- 72" Long (92" wide) expanded metal spring-assisted loading ramp
- 4 D-Rings on floor per side (more optional)
- Primered and painted black (other colors available)
- 4 Foot rear beaver tail
- 6" Oval stop/turn/tail and reverse lights with marker and clearance light kit. Meets (FMVSS108) Includes wiring harness

Standard Overall Length and Approximate Weight in Pounds*

Length	15'	16'	18'	20'
Weight	2219	2312	2510	2707

*Length includes 4" rear beaver tail and front bulkhead

Options:

- Custom designed to your specifications
- Mesh shelf under toolbox
- Folddown sides
- Shovel/weedeater rack
- 2" Hitch receiver with ICC bumper - includes D-rings and 7 pin RV style trailer connector
- Split rear ramps
- Mesh on beaver tail for traction

LB3000 Landscape / Trash Bodies

*Heavy Duty Dump Body for
Hauling Mulch, Wood Chips, Trash, etc.*



Shown Equipped with
14' Body with 48" Bulkhead

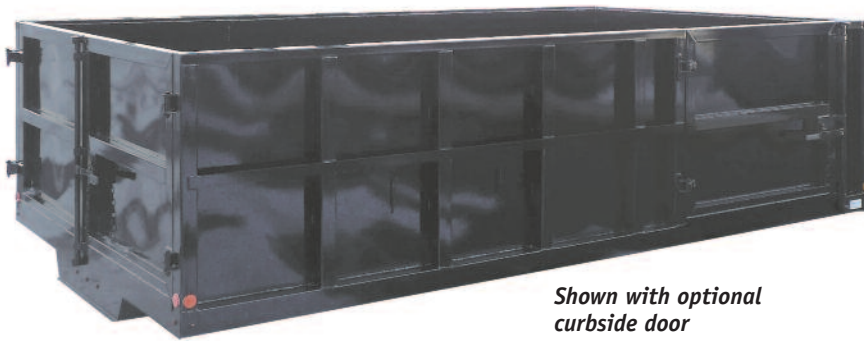
- 42" Sides
- Electric Hoist
- 3/4" Pintle Hitch Plate
- ICC Bar
- 2-5/16" Combo Pintle Hitch
- Backup Alarm

Full Installation Available on all Products We Sell

Install Options:

- Dump Hoist - Electric or PTO
- Rear Hitch Plate or Hitch Receiver
- Underbody Toolboxes
- Backup Alarms
- Brake Controller
- Trailer Connectors
- Load Tarps - Manual or 12V
- ICC Bars
- Liftgates

Standard Specifications and Options



Shown with optional curbside door

- Marker and clearance light kit meets (FMVSS108)
Includes wiring harness
- Primered and painted black, (other colors available)
- Standard width 96" outside
- 89-1/4" inside width
- Structural channel long sills
8'6" - 11'6" 6" x 8.2 lb. channel
12'6" - 16'6" 7" x 9.8 lb. channel
- 3" 10ga. formed channel crossmembers
12" o.c.
- 4" structural channel rear rail
- 10 ga. smooth steel floor with formed side rails
- 42" high weld-on bulkhead and sides constructed with 12 ga. sheet, box tubing uprights 24" o.c. and box tubing top rail, other heights available
- 1/4" x 2" rubrail (full length both sides)
- Barn door style tailgates with dual cam latch system

Standard Outside Length and Approximate Weight in Pounds*

Length	8'6"	9'6"	10'6"	11'6"	12'6"	14'6"	16'6"
Weight	1764	1921	2048	2206	2371	2662	2954

*Rear hinge and latch system adds 2-1/2" to overall length
*Inside length approximately 5-1/2" less than outside

Options:

- Full rear 10' drop light apron, 2 oval stop/turn/tail lights and 1 reverse light per side plus marker, clearance and license plate lights with wiring harness
- Cab shield (various sizes available)
- 50" curbside door with dual cam latch system
- Custom heights on sides and bulkhead
- Custom width and length
- Dump hoist - electric or PTO
- Load tarps, manual or 12V
- ICC Bar
- Super Duty Landscape Body includes same specs as the Heavy Duty Landscape Body except that it has a 7 ga. floor and 3" structural channel crossmembers and 10 ga. side walls
- 30" high rear barn doors (Recommended for use with optional chipper top)

See next page for Chipper Top

Removeable Chipper Top (Designed to be used with Swampy Hollow LB3000 Bodies)

Standard Specifications and Options



Shown on LB3000 body with 30" rear doors

- Primered and painted black, (other colors available)
- Standard size is 30" high, 96" wide
- 89-1/4" inside width

- 3 x 1 tube 1/8" w on bottom of chipper top with 3/4" pipes welded on, weld 3/4" pipes on inside of top rail on body. Then latch in place with 3/4" pins
- 3/4 - #9 mesh screening in every panel
- 14ga sheet metal

Standard Outside Length and Approximate Weight in Pounds*

Length	8'6"	9'6"	10'6"	11'6"	12'6"	14'6"	16'6"
Weight	581	626	656	737	795	897	984

Options:

- 26" overhang to be used with backpack toolbox
- Chip body toolbox
- Top or side ladder rack with access steps and grab handle
- Custom width and length
- Inside rubberized coating



*Photo Gallery
of Swampy Hollow
Truck Bodies*





Your Local Swampy Hollow Dealer



231 Maple Street, Honey Brook, PA 19344
610-273-0157 • 610-273-3169 fax

www.swampyhollow.com

